

linea xs in-ground mp

Color Changing

Linea xs inground not only seamlessly fits into the linea xs family with the same outstanding standard of the highest quality lighting technology and versatility in beam angles but also extends the family with the possibility of lighting facades or similar from the ground.

One-Block Design is an innovative concept in which the housing is manufactured from a single part. This reduces the number of sealing surfaces, which are possible weak points in the housing construction, to a minimum. The housing is manufactured from selected materials such as highly finished extruded aluminium profile and low-iron oxide tempered glass, which ensures a long lifetime of the luminaire even in the most adverse environments.

Dimensions



Metric:

629 mm, 934 mm, 1239 mm (X)

46 mm (Y)

74 mm (Z)

Imperial

24.77 in, 36.78 in, 48.78 in (X)

1.82 Inch (Y)

2.92 Inch (Z)

Technical Data

Luminous color	RGBA, RGBW2200K, RGBW2700K, RGBW3000K, RGBW3500K, RGBW4000K, RGBW6500K
Number of LED(s)	629 mm 24.77 in -> 16 LEDs 934 mm 36.78 in -> 24 LEDs 1239 mm 48.78 in -> 32 LEDs
Glare Protection	No Glare Protection, Honeycomb louver (internal, 6,4mm), Linear louver (internal)
Dimming	Integrated interface(s) / control: 0-10 V, DMX External operating device, e.g. DALI, DMX
Housing	Extruded aluminium profile
Lens	Ultra clear, tempered safety glass
Load	500 kg
Environment	Indoor, Outdoor
Ingress protection rating	IP67
Humidity	0 to 95%, non-condensing
Ambient temperature (Operation)	-40 °C - 40 °C -40 °F - 104 °F
Ambient temperature (Storage)	-40 °C - 80 °C -40 °F - 176 °F

Ambient temperature (Start-up process) -25 °C - 40 °C | -13 °F - 104 °F

Lumen Maintenance [L70] @ 25 °C 65.000 XXX

Lumen Maintenance [L70] @ 40 °C 40.000 XXX

Impact protection rating IK09

Electrical data

Integrated interface(s) / control: 0-10 V, DMX

Constant voltage 36 V

Power Consumption 629 mm | 24.77 in -> 20 W
934 mm | 36.78 in -> 30 W
1239 mm | 48.78 in -> 40 W

Protection class III

External operating device, e.g. DALI, DMX

Constant current 350 mA

Power Consumption 629 mm | 24.77 in -> 18 W | 53 VDC
934 mm | 36.78 in -> 26 W | 75 VDC
1239 mm | 48.78 in -> 34 W | 97 VDC

Protection class II

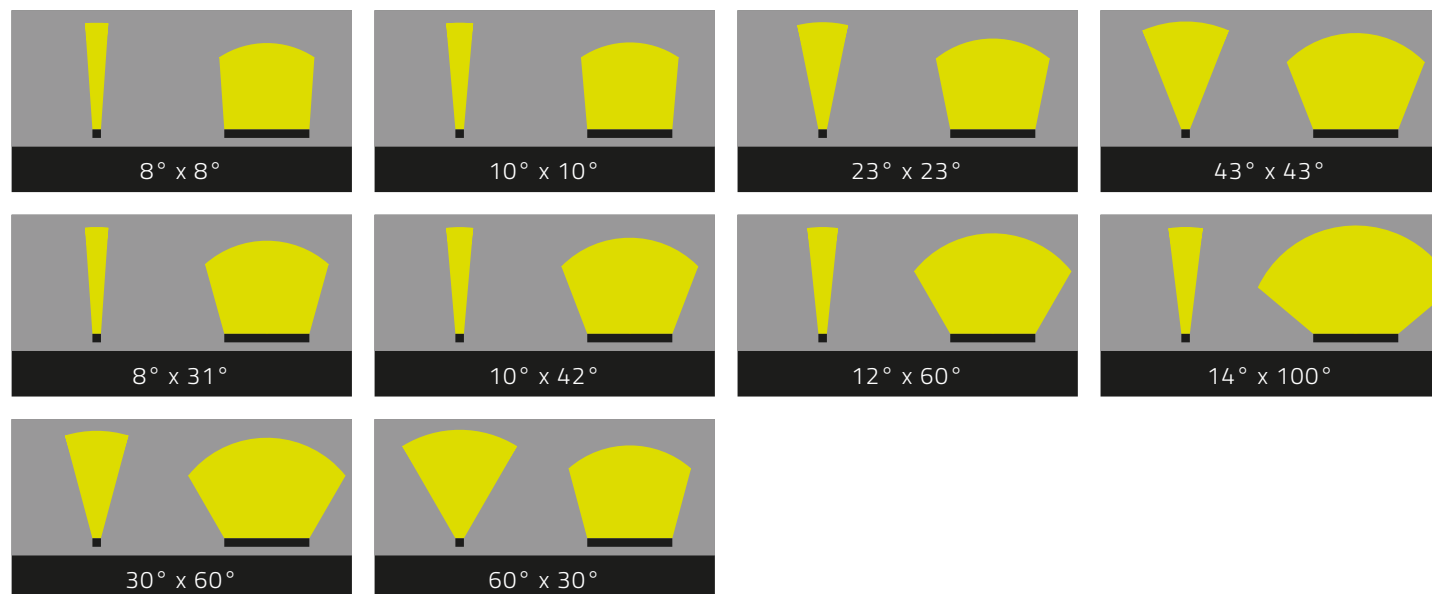
LED-Class Class 2 LED-Product

Approbation ETL, CE, FCC

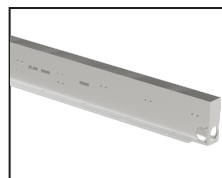
linea xs inground mp *Color Changing*

Designed and Developed in Bavaria.
Made in Germany.

Beam Angles



Accessories



linea xs inground installation
box



LED-Power supply
EXT-
T

Configurator

Product Code:
LIN-XS-IN-MP - - - - - - - - - -Y01

1

2

3

4

5

6

7

8

1 Luminous color	
RGBA	RGBA
RGBW83 / 22	RGBW2200 K / 3 SDCM / CRI > 80
RGBW83 / 27	RGBW2700 K / 3 SDCM / CRI > 80
RGBW83 / 30	RGBW3000 K / 3 SDCM / CRI > 80
RGBW83 / 35	RGBW3500 K / 3 SDCM / CRI > 80
RGBW83 / 40	RGBW4000 K / 3 SDCM / CRI > 80
RGBW83 / 65	RGBW6500 K / 3 SDCM / CRI > 80

2 Dimming	
010V	0-10 V
DMX	DMX
EXT	External operating device, e.g. DALI, DMX

3 Dimension	
629	629 mm / 24.76 in
934	934 mm / 36.77 in
1239	1239 mm / 48.78 in

4 Beam Angle	
8X8	8° x 8°
10X10	10° x 10°
23X23	23° x 23°
43X43	43° x 43°
8X31	8° x 31°
10X42	10° x 42°
12X60	12° x 60°
14X100	14° x 100°
30X60	30° x 60°
60X30	60° x 30°

5 Glare Protection	
OP	No Glare Protection
HL64	Honeycomb louver (internal, 6,4mm)
LLO	Linear louver (internal)

6 Approbation	
CE	European Union
ETL	North America

7 Wiring configuration	
I000	IN/OUT with open ends
IXOX	only IN with open end

8 Luminaire circuit	
PD	Power-Data
C1	Circuit 1
C2	Circuit 2